

F. Atlee Dodge Aircraft Services, LLC.

P O Box 190409 * Anchorage, Alaska 99519-0409
Phone: (907) 344-1755 * Fax: (907) 344-6720
atleedodge@acsalasca.net ~ www.fadodge.com

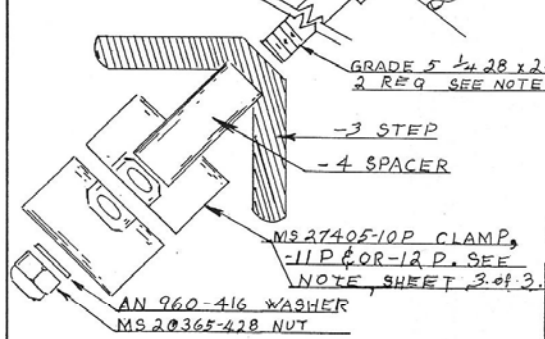
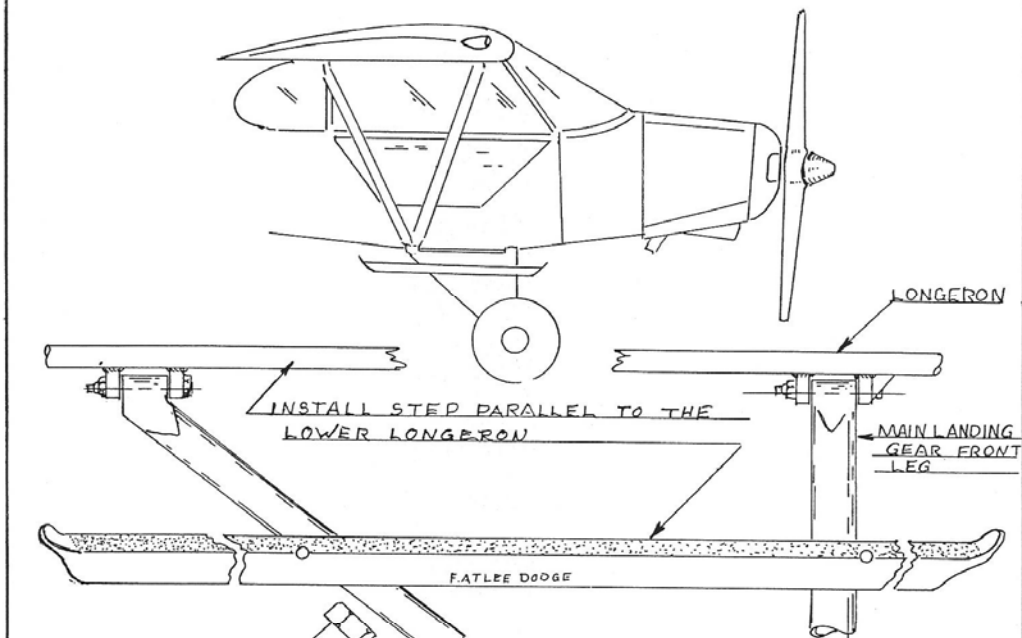
Drawing No. 3195-I
Sheet 1 of 3

February 23, 1993

INSTALLATION INSTRUCTIONS
F. ATLEE DODGE MAIN LANDING GEAR LONG STEP
FOR PIPER SERIES AIRCRAFT
J3C, J3F, J3J, J5A, PA-11, PA-12, PA-18 & PA-19

NOTE: The F. Atlee Dodge main landing gear long step is eligible for installation on all airplanes of the model series listed above that have been equipped with FAA approved installation of PA-18 "150" type main landing gear.

- 1 Remove the original PIPER STEP P/N 81903-03. Remove the 3/8" inch nut (AN365-616) AFT landing gear fitting and the 1/4" nut and bolt at AFT end of stop to the A/C longeron. Reinstall the AN 365-616 nut and washers if required.
- 2 Step to be installed parallel to the lower longeron.
- 3 Install MS 27405-11P clamp on the front landing gear leg, and the MS 27405-10P clamp on the rear leg. Landing gear leg with 1-1/2" inches front legs, use MS 27405-12P clamps, and rear legs with 1-3/8" inches use clamp MS 27405-11P. If the landing gear is covered with fabric, the fabric must be cut to receive the clamp. Remove fabric from under the clamp. **BE CAUTIOUS NOT TO DAMAGE THE BRAKE LINE WHEN INSTALLING CLAMPS.**
- 4 Install the long step with spacers installed on the bolts, as shown on sheet 2.
- 5 Install the nuts and washers as shown on sheet 2, and torque to 100 inch-pounds.
- 6 Check to be sure the step will support a 250-pound weight at all locations along its length without causing any slipping of the clamps.
- 7 Make any fabric repairs that re required. Such repairs must be made in accordance with AC43.13-1A, Chapter 3, Section 3.
- 8 Fill out FAA form 337 in duplicate and make an entry in the airplane's logbook, stating that the main landing gear long step was installed in accordance with the STC applicable to the mode designation of the airplane.
NOTE: The weight and balance produced by this modification is + 2.0 pounds at longitudinal station +10 inches.



NOTES:
 A. THE NAME "F.ATLEE DODGE" MUST BE STAMPED AS ABOVE IN 3/16 INCH LETTERS.
 B. USE GRADE 5 CAD PLATED BOLTS 1/4 28 x 2 1/2.
 C. TORQUE PER 43.13-1A CHAPTER 5, SECTION 1, FIG. 5.2

AIRCRAFT APPLICABLE: PIPER J-3, J-5, PA-11, PA-12, PA-14, PA-18, PA-19, L-21.

INSTALLATION INSTRUCTIONS

LANDING GEAR LONG STEP

MODEL 3195

LET	DATE	REVISION	BY	CHK
C	7-22-91	REDRAWN & ADDED NOTE C		D
B	4-4-91	ADDED SHEET 3 & CHANGES		D
A	2-2-91	DRAWING CORRECTIONS		D

F.ATLEE DODGE
 POB 190409
 ANCRAGE AK 99519
F. Atlee Dodge
 10-5-86

SHEET 2 of 3
 DWG 3195
 CHG C

PARTS REQUIRED

QTY.	P/N	DESCRIPTION	ITEM
1 ea	3195-1	LONG LANDING GEAR STEP ASSY. USED WITH LANDING GEAR FRONT LEGS 1 3/8" O.D. & REAR LEGS 1 1/4" O.D.	
1 ea	3195-2	LONG LANDING GEAR STEP ASSY. USED W/ LANDING GEAR FRONT LEGS 1 1/2" O.D. & REAR LEG 1 3/8" O.D.	
1 ea	3195-3	STEP	1
1 ea	MS 27405-10	CLAMP 1 1/4" SEE NOTES	2
1 ea	MS 27405-11	CLAMP 1 3/8" " "	3
1 ea	MS 27405-12	CLAMP 1 1/2" " "	4
2 ea	3195-4	SPACER	5
2 ea	1/4-28 x 2 1/2	BOLT - GRADE 5, CAD PLATED	6
2 ea	AN 960-416	WASHER	7
2 ea	MS 20365-42B	NUT	8

NOTES:

LANDING GEAR WITH 1 3/8" O.D. FRONT LEGS & 1 1/4" O.D. REAR LEGS
USE ITEMS NO. 1, 2, 3, 5, 6, 7 & 8. (P/N 3195-1 LONG LANDING STEP).

LANDING GEAR WITH 1 1/2" O.D. FRONT LEGS & 1 3/8" O.D. REAR LEGS
USE ITEMS NO. 1, 3, 4, 5, 6, 7 & 8. (P/N 3195-2 LONG LANDING GEAR STEP)

AIRCRAFT APPLICABLE:

PIPER — J3, J5, PA-11, PA-12, PA-14,
PA-18, PA-19 & L-21.

INSTALLATION INSTRUCTIONS LANDING GEAR LONG STEP.

FATLEE DODGE
PO BOX 190409
ANCHORAGE AK
190409 4-4-93

DRWG NO
3195-I

SHEET 3 OF 3 CHG